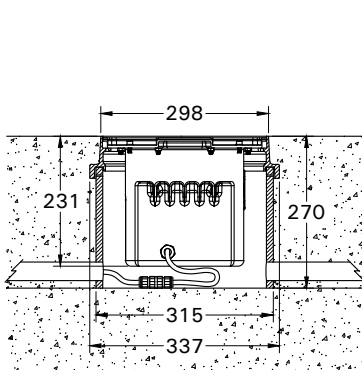


INSTALLATION AND SERVICE MANUAL

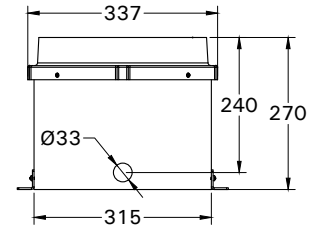
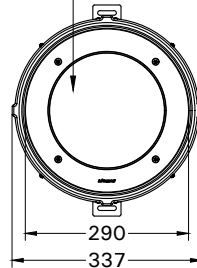
For Installation of Melbourne 5 inground uplight + Accessories A614491.
Model. UMEL-60041 and UMEL-60043

Product drawing (dimensions)

SUITABLE FOR WET LOCATIONS



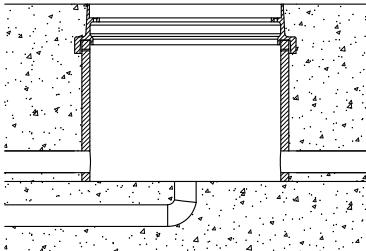
Ta 40°C
Glass surface temp = 65°C



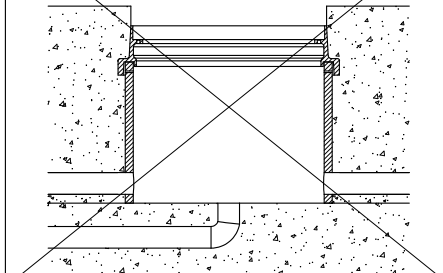
RECESSING BOX IN HDPE.

Static load resistance 5000 kg

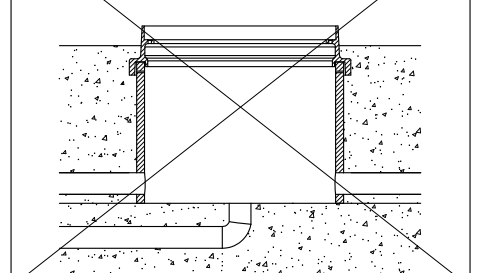
OK
YES



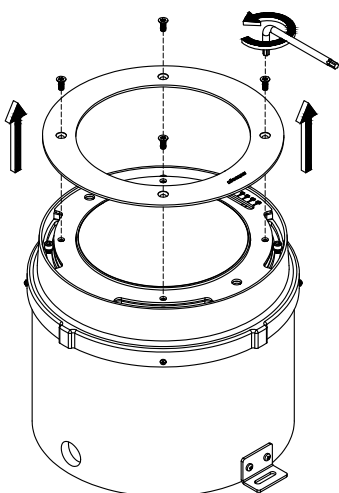
NO



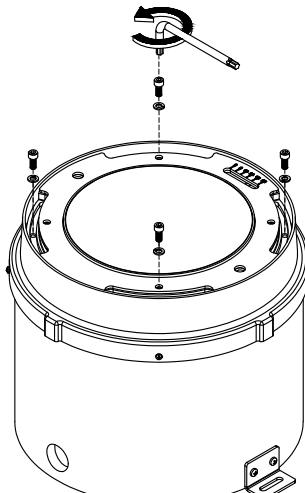
NO



①

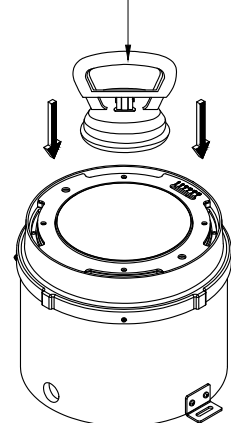


②



③

Accessories A614491 :
Glass suction cup

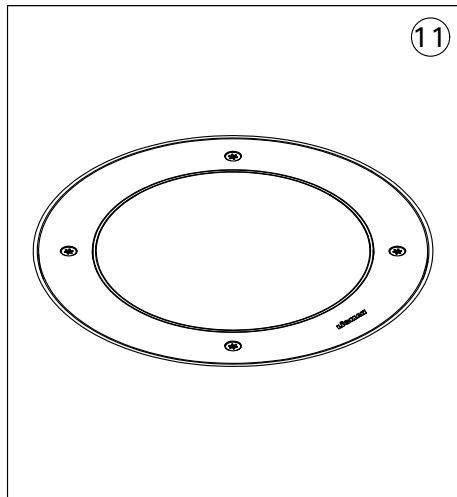
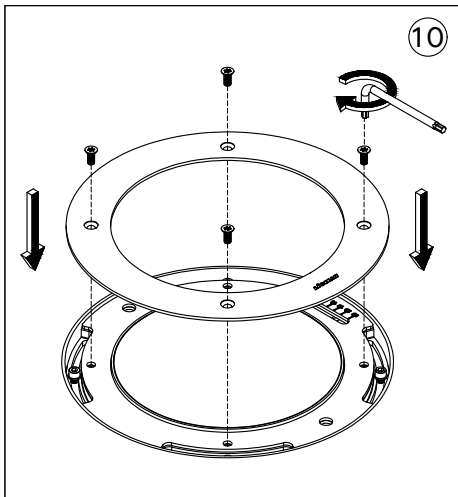
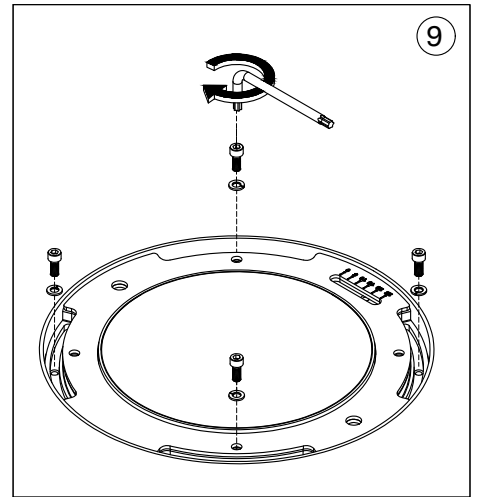
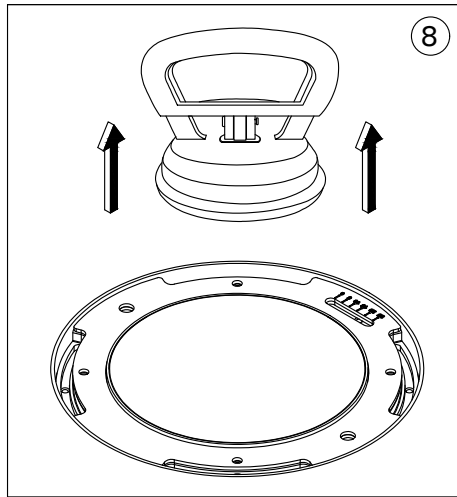
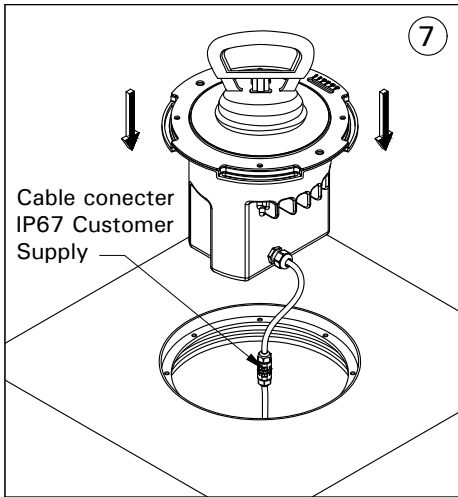
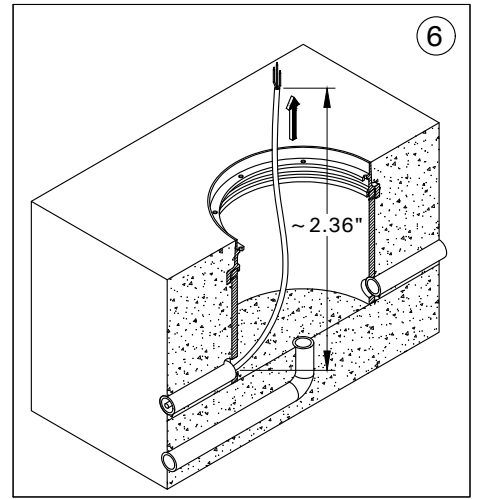
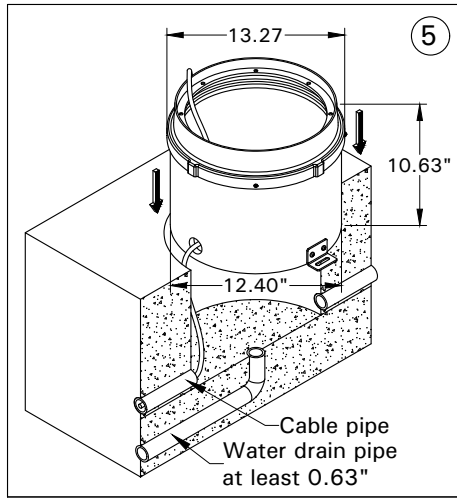
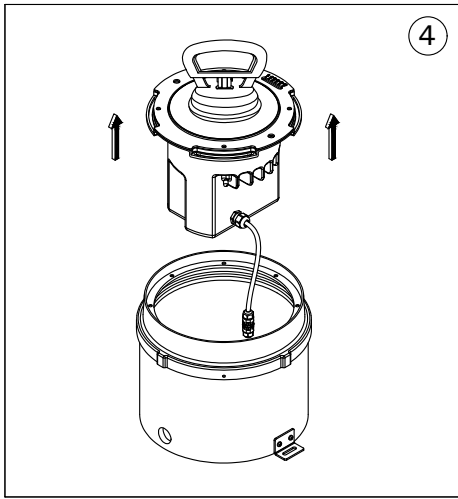


Notice to installer :

1. **WIRING INSTRUCTIONS** Warning : RISK OF FIRE AND ELECTRICAL SHOCK. : FIXTURE MUST BE INSTALLED BY A QUALIFIED ELECTRICIAN ONLY>FIXTURE IS INTENDED FOR INSTALLATION IN ACCORDANCE WITH THE NATIONAL ELECTRICAL CODE, LOCAL AND FEDERAL CODE SPECIFICATIONS. DISCONNECT POWER BEFORE SERVICING.
2. This fixture has a **VOLTAGE SPECIFIC BALLAST**, Check that the supply voltage is the same as the installed ballast voltage.

Ligman Lighting USA

7144 NE Progress Court, Hillsboro
Oregon, 97124, USA
Tel : 503 645 0500 | Fax : 503 645 8100



Note : Brush finish stainless steel products requirement to wipe the product periodically with a light oil (WD40 or equivalent) to remove any staining.